

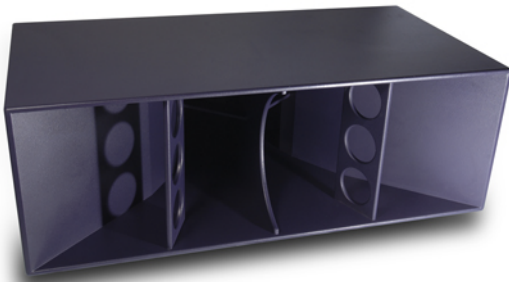
F221

Funktion One are renowned for the controlled energy of our loudspeaker systems – this is nowhere more evident than in our bass enclosures which deliver physicality with accuracy for truly involving musical experiences. In the 1980s Funktion One's Tony Andrews pioneered work on the development of the first 21" loudspeaker ever made. This provided the low end for his highly regarded system design of the time which was used on world tours by groups including Pink Floyd and Dire Straits. More recently, with F1's access to advanced materials and Andrews' heightened understanding of loudspeaker and enclosure tuning, his original 21" concept was due for a revisit. By using Neodymium instead of Ceramic, the magnet weight has been reduced from 28.5kg to 11.5kg which opened the possibility for a dual 21". The Funktion-One designed drivers are incredibly robust and have 6" voice coils for maximising power input. The resulting F221 is an exceptionally efficient high-intensity bass enclosure providing fast, accurate, physical bass of the highest calibre.

The product is supplied with a choice of 4 Ohm or 8 Ohm drivers and optional wheels and throat grills.

Features:

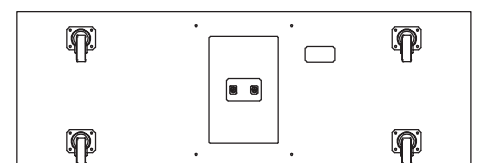
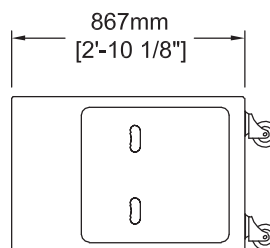
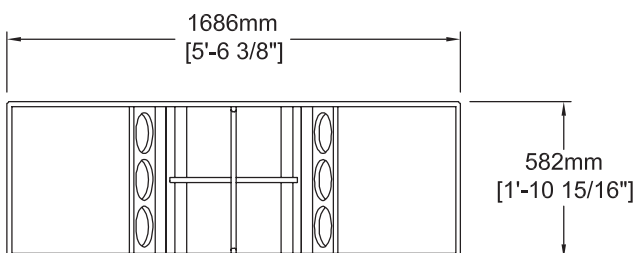
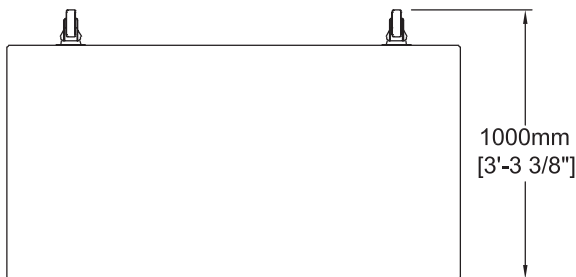
- Advanced Andrews' loading
- Funktion One designed drivers with Neodymium magnets
- Integral handles
- Optional throat grills
- Optional wheels nest inside flare of adjacent enclosure



Driver	Operating Band*	Sensitivity (1W at 1m)	Power (rms**)	Nominal Impedance
2 x 21"	20 - 125Hz	107dB	1500W	2 x 4Ω 2Ω Total or 2 x 8Ω 4Ω Total

**Please check website for latest crossover settings*
***AES rated*

Frequency Response ±3dB:	40Hz - 180Hz
Weight:	130kg (288lbs)
Construction:	18mm Birch Ply
Connectors:	2 x Speakon NL4 (One driver wired pins 1 +/- and one on 2 +/-)



Wheels optional

